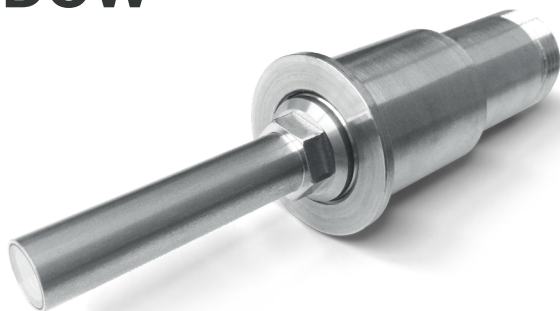


## Pressure Barrier SKL-DOW

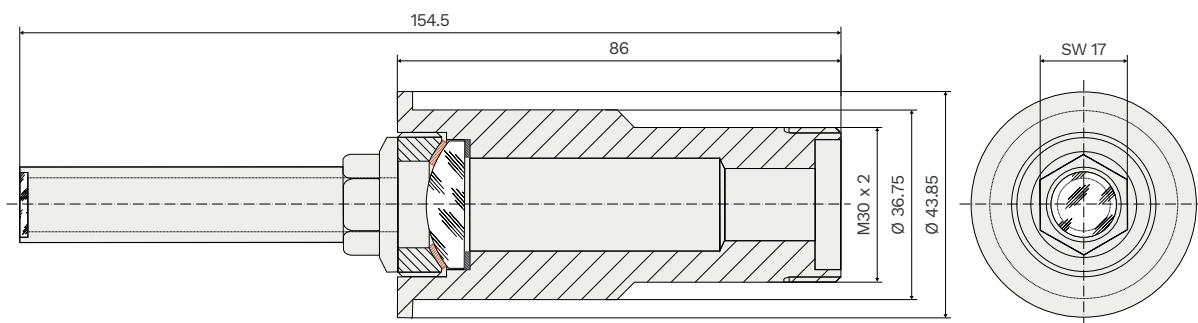
Protects the scanner optics from pressurized combustion chamber atmosphere. Condensate formation on lens prevented effectively by shifting the sapphire pressure into the hot area. All dimensions are configurable to suite customer's application.



### 1 | Technical data

Spectral transmission	190 nm to 2700 nm
Maximum pressure	8 bar
Glass	Sapphire glass, borosilicate (lens)
Material	stainless steel 1.4307, Invar 42
Flame orientation	axial
Operating temperature	-30 °C to +350 °C
Dimensions*	Ø 43,85 mm x 154,5 mm
Pitch circle diameter	60 mm
FOC connector	M30 x 2
Weight	approx. 0.5 kg

### 2 | Dimensions



\* Dimensions customizable.