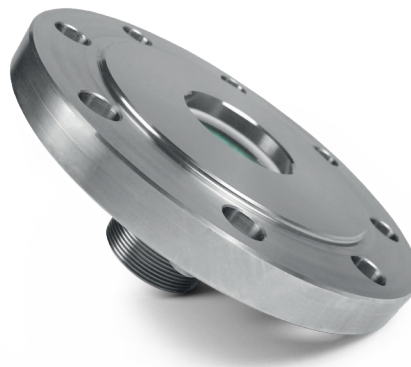


# Pressure barrier 4" 150 lbs

Protects Flame Scanner against pressure applying of the combustion chamber.



## 1 | Technical data

Spectral sensitivity	300 nm to 2700 nm
Maximum pressure	150 lbs
Glass	borosilicate
Material	stainless steel 1.4541
Flame orientation	axial
Dimensions	228.6 mm x 87.9 mm
Ambient temperature	-60 °C to +350 °C
Process connection	4" 150 lbs (ANSI B 16.5)
Flame Monitoring connection	G 2" male thread
Weight	approx. 9 kg

## 2 | Dimensions

