

Pressure barrier 150 lbs

Protects Flame Scanner / Compact Flame Controller against pressure applying of the combustion chamber. Optionally available with purge media flange and for higher pressures.

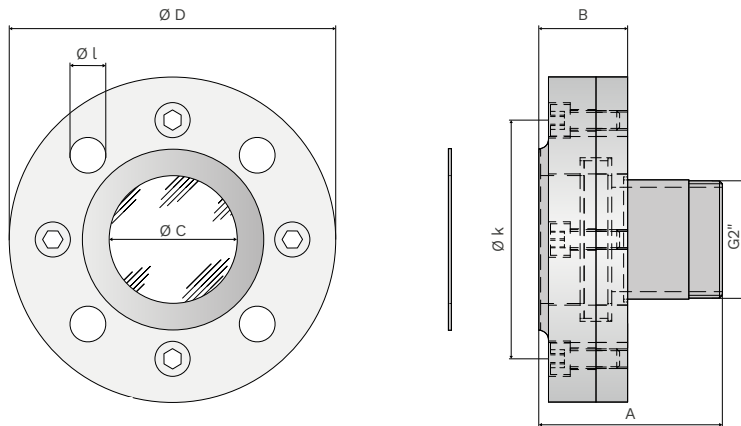


1 | Technical data

Spectral sensitivity	300 nm to 2700 nm
Pressure-Temperature Rating (p/T-Rating)*	15.9 bar - -29 °C to +38 °C 15.3 bar - +50 °C 12.0 bar - +150 °C 10.5 bar - +230 °C
Glass	borosilicate
Material	stainless steel, steel
Ambient temperature	-60 °C to +230 °C
Process connection	1 ½" to 4" 150 lbs (ANSI B 16.5)*
Flame Monitoring connection	G 2" male thread
Weight	1 ½" approx. 5 kg 2" approx. 6 kg 3" approx. 9 kg 4" approx. 9 kg

* Other sizes and pressure classes available on request.

2 | Dimensions



All dimensions in mm.

Type	Ø D	Ø l	Ø C	Ø k	A	B
1 ½"	127.0	19.0	52.0	98.6	89.5	39.5
2"	152.4	19.0	52.0	120.7	94.1	44.1
3"	190.5	19.0	78.0	152.4	100.3	50.3
4"	228.6	19.1	102.0	190.5	107.3	57.3

4 holes are available for fastening the pressure barrier to the process flange. For process flanges with 8 holes, please consult us. Suitable seals are included in the scope of delivery.

3 | Part numbers

Type	Part numbers
Steel	6592-8925-XX
Stainless steel	6595-8925-XX

If required, a material certificate according to EN 10204 - 3.1 is available (specification required when ordering).